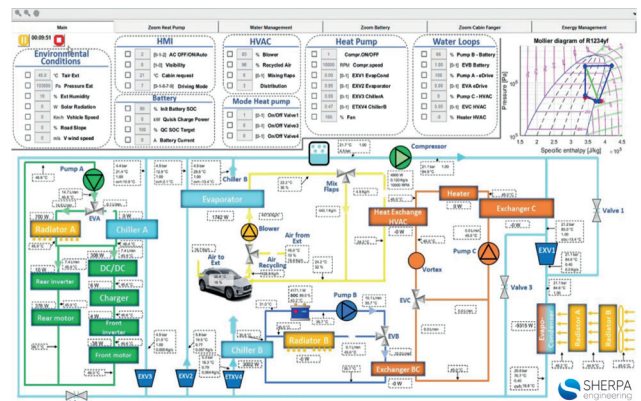


# BENCHMARK SIMULATORS

## A solution based on digital twins

A flexible, fast, customisable and economical complement to the benchmark studies of BEV manufacturers and Tier 1







### Already available

<b>Tesla Model 3</b> 2018	<b>Jaguar I-Pace</b> 2019	<b>Hyundai Kona</b> 2020	<b>VW ID3</b>
			
Battery Pack / QuickCharge (250kW)	Heat Pump indirect with Heat Recovery	Heat Pump with Inner Condenser	CO <sub>2</sub> Heat Pump

### Coming soon

<b>Ioniq 5</b>	<b>Toyota BZ4x</b>
	
Planned December 2023	Planned January 2024

<b>Tesla 3</b> 2021	<b>Fiat 500e</b>	<b>Geely ZEEKR001</b>	<b>BMW iX3</b>
			
Octovalve & H/P design	Simplified cooling & heating loop	First Chinese model	Internal Heat Exchanger

